



Fibers for Life.



**SYLOTHIX®**  
**ARBOTHIX®**  
**for Viscous Systems**

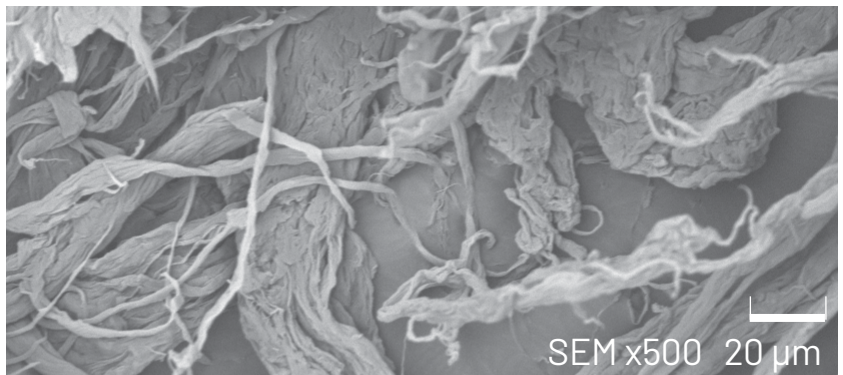
ARBOTHIX®/SYLOTHIX®

## Thixotropic Agent Based on PE-Fibers

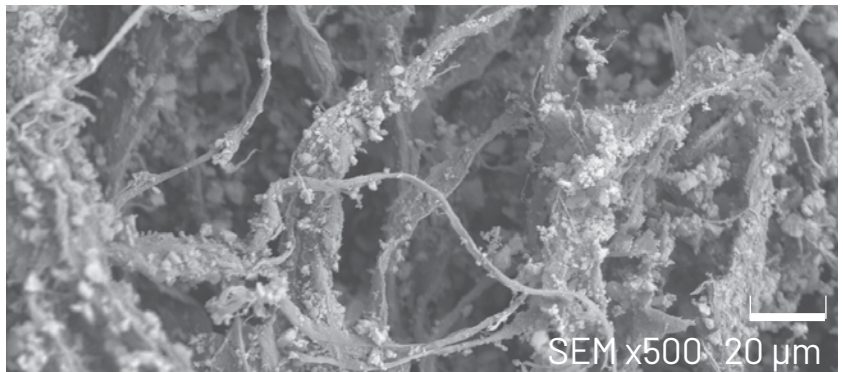
Made of synthetic, highly fibrillated polyethylene fibers.  
Some grades are coated with synthetic, amorphous silicic acid.

### ADVANTAGES

- Predictable shear thinning (thixotropic) effect that improves handling and placement
- Efficient viscosity increase at rest to ensure your product stays put after placement
- Stabilizes pigment systems to prevent segregation/bleeding
- Easier mixing and less dust formation than mineral systems
- Mechanical reinforcement due to interlocking network effect



**SYLOTHIX® 51**



**SYLOTHIX® 52**

ARBOTHIX®/SYLOTHIX®

# Thixotropic Agent Based on PE-Fibers

## TYPE CHART

Product Code	Fiber Length (µm)	Amorphous silicic acid portion (3 µm)	Moisture content	Mixing ease	Effectiveness	Health and safety information*, **
SYLOTHIX® 51	400	–	maximum 2%	+	+++	Fine polyethylene fiber.
SYLOTHIX® 52	400	~ 60%	maximum 3%	++	++	Combination of fine polyethylene fibers and synthetic amorphous silicic acid.
SYLOTHIX® 53	100	~ 50%	maximum 3%	+++	+	Combination of fine polyethylene fibers and synthetic amorphous silicic acid.
ARBOTHIX® PE 100	100	–	maximum 2%	+++	++	Fine polyethylene fiber.

\* Please follow safety guidelines as well as national legislation and regulations. Additional information can be found on our Safety Data Sheet.

\*\* During processing care, must be taken to avoid dust generation.

## APPLICATION FIELDS USING

- Epoxy
- Polyester
- Polyurethane
- PVC
- MMA (Methylmethacrylat)
- Bitumen



## GUIDANCE NOTES

- Can be worked into all liquid media and resins with high-speed mixers/dissolvers.
- Stirring or dispersing time is approximately 5- 10 minutes. Should not be compacted/compressed before blending.
- Blending temperature should not exceed 110°C (230°F). Recommended dosage: 1 - 3% by weight.



## PACKAGING

- 10 kg bags, 120 or 200 kg/pallet
- 1 kg buckets (special order), 48 kg/pallet

### DISCLAIMER

The above mentioned information is based on our practical knowledge and experience and is meant to be helpful when using our products. Due to the different materials and processes involved, we recommend in any case, adequate testing at your company or consultation with us. We cannot be held liable for this information.